

For Immediate Release

DATE: February 2017

CONTACT: Kori Radloff, korir@rosetheater.org, 402-502-4641

The Rose Theater announces the cast of *Huck Finn*



Nicklaus Knipe



Kabin Thomas



Robby Stone



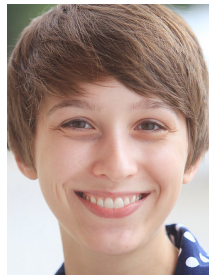
Jessica Logue



Nils Haaland



Michael Miller



Autumn Simpson



Hayley Greenstreet



Tyrone Beasley

(OMAHA, Nebr.) The cast of *Huck Finn* will bring Mark Twain's great American novel to life in a thrilling adaptation, presented February 24-March 12, 2017, on The Rose Theater stage.

In this retelling of the classic story, Huck Finn flees the claws of "civilization" for the freedom of the mighty Mississippi. Along the way, he comes across Jim, an escaped slave. Opening Huck's mind to the reality of slavery, the journey downriver with Jim is a real education for the young boy.

=MORE=

The Rose
2001 Farnam Street
Omaha, NE 68102

t (402) 345-4849
f (402) 344-7255
www.rosetheater.org

the
Rose
Performing Arts
FOR CHILDREN AND FAMILIES

The Rose Theater announces *Huck Finn* cast

Page 2 of 2

Contact: Kori Radloff, 402-502-4641

The cast of *Huck Finn* consists of Rose Theater favorites. Nicklaus Knipe, who recently captured the hearts of audiences in *Goodnight Moon*, will portray the title role of Huck Finn. Kabin Thomas (*Zen Ties*) will bring a sensitive dignity to the role of Jim. They will be joined on stage by Robby Stone as Tom Sawyer and Harvey Wilkes (*Shrek, Prancer, Honk!, Peter & the Starcatcher, Big Nate, Jackie & Me*); Jessica Logue (*Goodnight Moon*) as Widow Douglas and Mary Jane; and Nils Haaland as Pap, King and Uncle Silas (*Prancer, Jackie & Me*).

Three Rose artist educators are also members of the cast: Michael Miller (*James & the Giant Peach, Lily's Purple Plastic Purse*) will play Duke, Mr. Robinson and Farmer; Autumn Simpson (*Jungle Book*) will play Aunt Polly and Joanna; and Hayley Greenstreet (*Thumbelina*) will play Miss Watson and Aunt Sally.

Huck Finn is directed by Tyrone Beasley. Beasley is the Artistic Associate – Director of Outbound Programming and was responsible for bringing the provocative shows *I Dream of an Omaha Where...*, *Changed* and *In the Middle of Nowhere* to The Rose stage. No stranger to the stage, Beasley has worked with acclaimed directors Peter Sellars (*The Merchant of Venice, It is Now Our Time*), Claude Purdy (*Jitney*), Charles Marowitz (*Shakespeare*), David Wheeler (*The Trials of Ezra Pound*) and Antonio Banderas (*Crazy in Alabama*), among others. Beasley has performed in many theaters around the globe including The Goodman Theatre (Chicago), Victory Gardens Theatre (Chicago), Thalia Theater (Hamburg, Germany), MC93 Bobigny (Paris, France) and The Royal Shakespeare Company (London, England). He has worked in front of the camera and behind the scenes in post-production on film and television projects for Disney, Fox, Sony, VH1, TriStar Pictures and the BBC. An Omaha Benson High School graduate, Beasley earned a BFA in studio arts from the University of Nebraska at Omaha. He attended California State University, Long Beach for graduate study in theater arts, where he taught acting classes there as a teaching associate and was an ensemble member of California Repertory Company. He served as the Artistic Director at The John Beasley Theater (JBT) in Omaha for ten years, managing and teaching the theater's workshop programs that were a part of JBT's mission of community outreach and developing a local pool of trained actors. He also acted in and directed numerous plays at the JBT.

Huck Finn is recommended for families of children ages ten and up. The show runs February 24-March 12, 2017, with performances on Fridays at 7 pm, and Saturdays at 2 pm and 5 pm, and Sundays at 2 pm. The show is approximately 70 minutes long without an intermission.

Tickets for *Huck Finn* are \$20. Discount ticket vouchers are available at all area Hy-Vee stores. Members of The Rose receive four free tickets to the production.

Huck Finn is sponsored by Children's Hospital & Medical Center, Nebraska Furniture Mart, Humanities Nebraska, the Kiewit Corporation, the Nebraska Arts Council and the Nebraska Cultural Endowment. Special opening night activities are sponsored by Kiewit Companies.

###